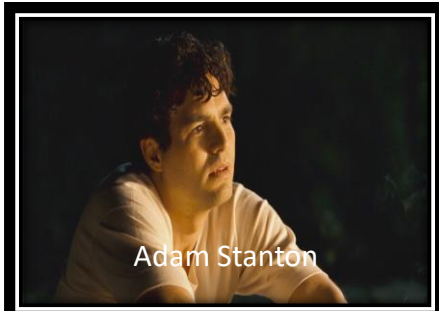


# Who's Who in *All the King's Men*

Match the picture with the description



1. Delusion woman who marries men she doesn't love \_\_\_\_\_
2. Tormented political operator \_\_\_\_\_
3. Powerful governor, called "The Boss." \_\_\_\_\_
4. Idealistic woman; Willie Stark's mistress and Jack's lover \_\_\_\_\_
5. Respected judge who commits suicide \_\_\_\_\_
6. Brilliant surgeon; Anne's brother; disillusioned by father's corruption \_\_\_\_\_
7. Cynical, passive muckraker; becomes responsible \_\_\_\_\_
8. Willie's Lieutenant Governor. \_\_\_\_\_