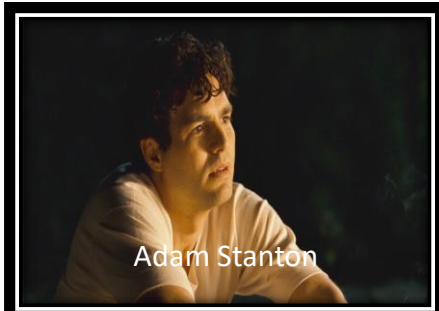


Who's Who in *All the King's Men*

Match the picture with the description

KEY



1. Delusion woman who marries men she doesn't love
JACK'S MOM
2. Tormented political operator – **SADIE BURKE**
3. Powerful governor, called "The Boss." **WILLIE STARK**
4. Idealistic woman; Willie Stark's mistress and Jack's lover **ANNE STANTON**
5. Respected judge who commits suicide **IRWIN**
6. Brilliant surgeon; Anne's brother; disillusioned by father's corruption **ADAM STANTON**
7. Cynical, passive muckraker; becomes responsible
JACK BURDEN
8. Willie's Lieutenant Governor. **TINY DUFFY**